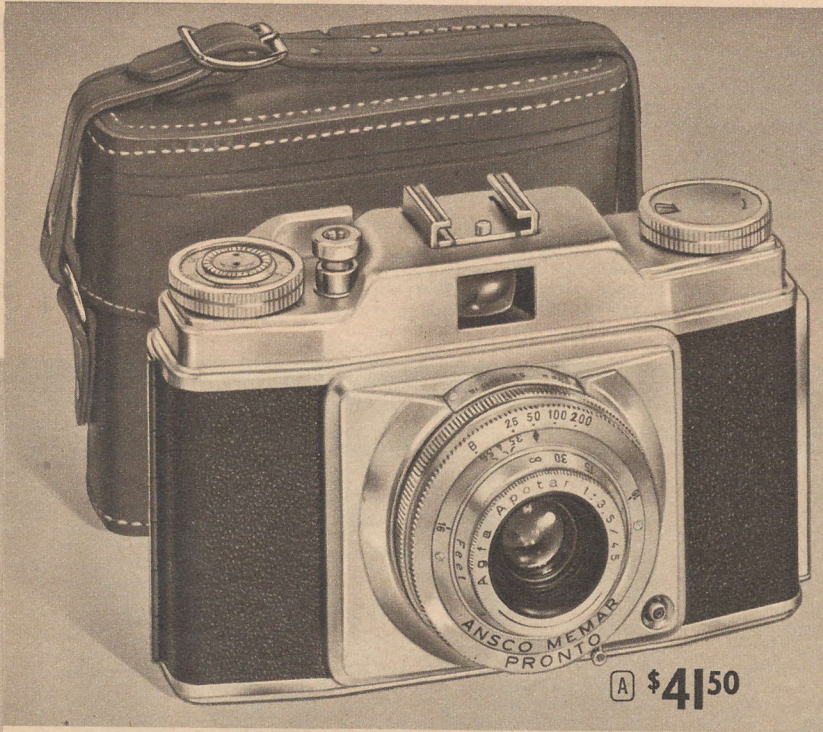


At Wards, At Least 10% Trade-In Allowance on



Anso Memar With Rapid Transport and Self-Timer

- Ideal Camera for Beginners, Easy to Understand and Operate
- Self-Timer Gives You Ample Time to Get Into the Picture Too
- Flash Unit Fits on Accessory Clip—No Loose, Dangling Wires

A Free Color Film Included. One of the finest values in the 35 mm. field. Made by skilled craftsmen in Western Zone of Germany. Combines utmost efficiency with low cost. Looks and performs like an expensive, de luxe camera.

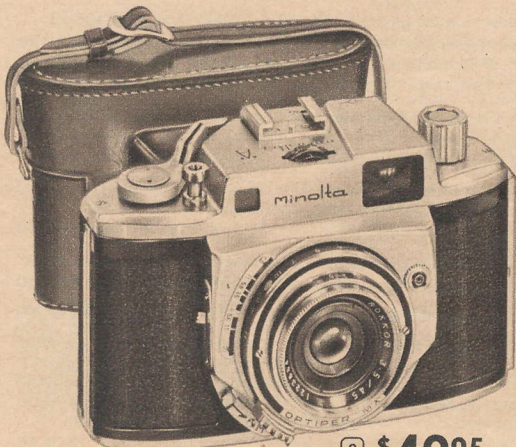
Fully Automatic—thumb lever cocks shutter, advances film, and sets exposure counter in one quick operation. You can't take a double exposure, or forget to expose a frame. Built-in self-timer lets you get into the picture yourself. Optical eye-level viewfinder shows large, bright image for easy focusing. Built-in film indicator reminds you of type of film you have in camera. Takes 20 or 36 exposures on 35 mm. film.

Agfa Apotar f/3.5 lens is coated for color correction. Stops down to f/16. Focuses from 3 ft. to inf. Pronto shutter has 4 speeds from 1/25 to 1/200-sec. plus Bulb. Flash synchronized to 1/100 with SM and SF bulbs; at 1/25 with No. 5 or 25 bulbs, X delay for electronic flash. ASA flash fitting. Order Flash Gun separately on Page 43 . . . order any unit with ASA fitting such as the Folding B-C Flash with collapsible reflector which sells for \$7.95—fits on camera's accessory clip. Die-cast all metal body has black leather cover and satin-chrome trim. Size overall about 5x3³/₁₆x2¹/₂ in. Takes Series 5 Slip-on Adapter Ring 1³/₁₆ in. available on Page 29. Ship. wt. 1 lb. 8 oz. 67 R 520L—Camera with FREE Kodachrome film \$4.50 Down Cash \$41.50

Anso Eveready Case for Memar Camera. Made of top-grain brown cowhide.

67 R 519—Ship. wt. 8 oz. Complete with shoulder strap. 6.95

Minolta "A" with Rapid Film Transport and 4 Element Lens



- Coupled Rangefinder and Viewfinder for Quick Focus
- Lever Action Cocks Shutter and Advances Film

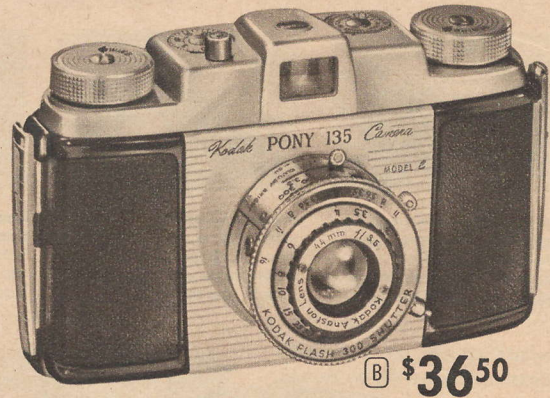
C Free Color film included. Produces needle-sharp, full-toned negatives and transparencies. Fully automatic. Fast single-stroke lever advances film, cocks shutter and changes film counter. Coupled rangefinder and viewfinder; when rangefinder is in focus, lens is in focus too. Brilliant single-window super-imposed image viewfinder makes focusing quick and easy. Imported from Japan.

Click-stop diaphragm. All controls visible from top of camera. Back removable for easy loading; built-in anti-static pressure plate keeps film accurately positioned. Depth of field scale enables you to quickly check area in focus before you shoot.

Precision-built 45 mm. 4-element f/3.5 coated lens. Focuses from 2.7 ft. to inf. Stops down to f/22. Highly accurate Optiper shutter has 8 speeds from 1 to 1/300-sec., plus Bulb. Synchronized at all speeds for No. 5 or 25, with X delay for electronic flash. Rugged all metal case, covered with black leather, chrome trim. Size overall 2¹/₂x3x5 in. Ship. wt. 1 lb. 8 oz.

67 R 438L—Minolta Camera, With FREE Kodachrome Film including processing. Only \$5 Down. Cash \$49.95

67 R 439—Eveready Case for Minolta. Ship. wt. 8 oz. 7.50



Kodak Pony 135, Model C—Fully Synchronized

- Fast f/3.5 Lens Stops Down to f/22—Shutter Speeds to 1/300
- Color-Dot System Allows Quick Settings for Action Shots
- Fully Synchronized for flash bulbs or electronic flash.

B Free Kodachrome film included. Created to meet the demand for a budget-priced 35 mm camera conforming to high Kodak standards of quality. Versatile and easy to use. Has many features not usually found in an inexpensive camera . . . Easy-loading eliminates threading film; spool automatically catches end of film and guides it into camera. Smooth action shutter release helps keep camera steady for sharp pictures. Use conventional speed, lens, and distance settings, or for simplified operation—Just set shutter speed, lens opening, and distance setting on red figures and any member of the family can make color pictures with box camera simplicity. Large optical eye-level finder for easy composition. Exposure selector for Kodachrome and Ektachrome film. Automatic film stop and exposure counter prevent double exposures or un-exposed film. Handy film load indicator. Uses 20 or 36-exposure color or black-and-white 35 mm film.

Coated f/3.5 anastigmat lens focuses from 2¹/₂ ft. to inf. Stops down to f/22. Kodak Flash shutter has 4 speeds from 1/25 to 1/300-sec. plus Bulb. Synchronized at 1/100 with SM or SF bulbs, at 1/25 for No. 5 or 25 bulbs, ASA flash fitting. Order Flash Gun separately on Page 43 . . . Attractively styled in high impact brown and gray plastic case with brushed chrome front plate and lens tube. Size overall 5³/₄x3¹/₂x3¹/₄ in. Uses 1¹/₂-in. Series No. 5 Adapter Ring available on Page 29. Ship. wt. 1 lb. 8 oz.

67 R 479L—Camera, FREE 20-exp. film. \$4 Down. Cash \$36.50

67 R 481—Wards Leather Case for Pony. Ship. wt. 8 oz. 4.78

ONLY AT WARDS

Interested in a color camera that takes exquisite transparencies in standard 2 x 2-in. mounts? See Kodak Camera on back page. Only at Wards can you buy it complete with flash for 50% off.

For Beginners

Only \$2.69

This Is Photography, an excellent handbook for beginner or advanced amateur. Written by experts who have first-hand and knowledge of both black-and-white, and color photography. Best of all, it is written in easy-to-read, non-technical terms that a beginner can understand. 260 pages complete with illustrations. By Eastman Kodak Co.

67 R 4823—Wt. 1 lb. Hard Cover. . . . \$2.69

