

## KONICA FS-1/Specifications

Type: 35mm single lens reflex, AE (Automatic Exposure) camera with focal plane shutter.

Picture Size: 24mm x 36mm

Standard Lenses: Konica Auto Hexanon Lenses  
40mm f/1.8 50mm f/1.4 50mm f/1.7 57mm f/1.2

Lens Mount: Konica bayonet 47mm diameter

Shutter: Vertical travel, metallic.  
Electronic with dual micro-solenoids computer controller

Shutter Speed: B, 2 second 1/2/4/8/15/30/60/125/250/500/1000th second

Flash Synch.: Built-in hot shoe and PC terminal (X). Autoset 1/100th second synch speed with X24 autoflash 1/60 second with conventional strobe

Viewfinder: Eye level pentaprism type

Field of View: 90%

Magnification: 0.84x with 50mm lens 0.67x with 40mm lens

Viewfinder Information: LED display readout for: f/stop (1 dot = 1 stop)  
Under exposure warning Over exposure warning  
Manual aperture indicator Flash ready indicator  
Battery condition indicator

Focusing Screen: Konica three way system with split image, microdiaphragm and fine ground glass.

Light Metering: Center weighted/GaAsP Cell.  
Through the lens (TTL) metering system.

Aperture Control: Through the lens (TTL) full opened aperture viewing. Shutter priority system.

Meter Couple Range: ASA 100 EV 0-19 with f/1.4 Lens  
EV 0.7-19 with f/1.8 Lens

Film Speed Ranges: ASA 25-3200

Exposure Control: Shutter speed priority system with digital control magnetic lock

Shutter Release: Soft touch release with dual microswitch.

Release Lock: Positive On/Off lever surrounds release button

Film Loading: Konica auto film load system

Film Transport: Konica auto film advance system

Film Rewind: Rapid rewind crank system

Frame Counter: Oversize window with additive counter, auto start to No. 1

Self-Timer: Digital control electronic self-timer with 10 second delay and blinking LED display.

Power Source: 4 AA alkaline penlight batteries power entire system in quick change power module.

Size: Body only 146mm x 46mm x 90mm (4.7" x 1.8" x 3.5")

Weight: Body only 560gr. (19.8oz)  
Body with 40mm f/1.8 lens and batteries 800gr. (28.2oz.)

\*Specifications subject to change without notice

For Further Details, Contact:

w/40-1.8 279.<sup>00</sup>

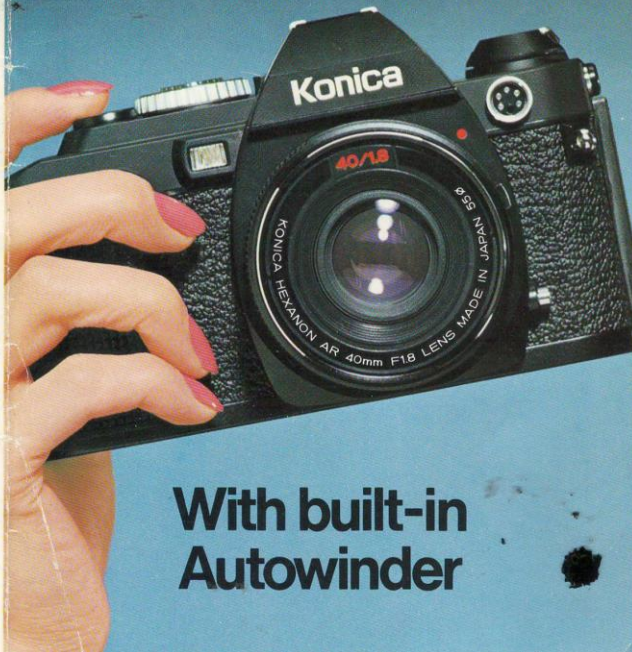
*Adell*

**KONICA CORPORATION**

25-20 Brooklyn-Queens Expwy. West, Woodside, NY 11377 (212) 932-4040  
1011 Chestnut St., Burbank, CA 91506 (213) 843-1883

# Konica

# FS-1



**With built-in  
Autowinder**

## The world's first autoloading / autostart / autoadvance / autoexposure / autoflash / all-electronic 35mm camera

The Konica FS-1 . . .  
an entirely new concept in sophisticated cameras . . .  
a totally integrated camera  
featuring many design innovations:  
**autoload** . . . drop-in the 35 cartridge –  
the FS-1 loads itself!  
**autostart** . . . close the camera back –  
the film automatically advances  
to frame number one.  
**autoadvance** . . . expose the first frame;  
the film automatically advances  
to the next frame.  
**autoexposure** . . . fully automatic exposure  
with Konica's shutter-priority system,  
to assure sharp results.  
**autoflash** . . . fully automatic flash photography  
and perfect flash photos using Konica's  
matching X-24 Auto electronic flash  
... incredible!

The history-making Konica FS-1,  
a completely new kind of SLR, electronically operated  
and electrically powered - featuring  
the newest look in SLR cameras.



# Konica FS-1/Auto film loading

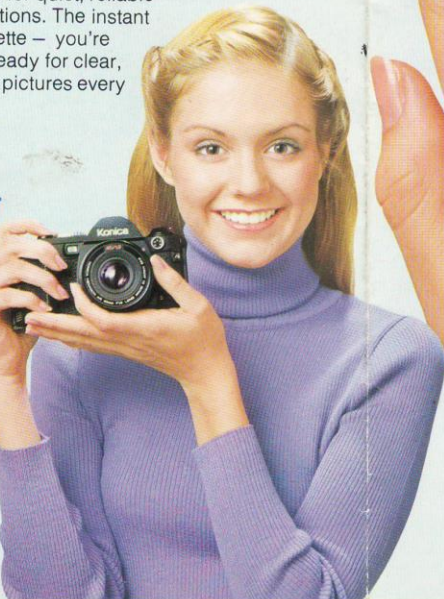


**1 It's so easy!**  
Drop-in any standard 35mm film cassette, extend the film tab and close the camera back. The Konica FS-1 camera automatically advances the film to frame number one, ready to . . .

**2 Focus and shoot!**  
A large capacity central processing unit (CPU) analyzes, and controls all camera and exposure functions instantly. Advanced technology micro solenoids, micro motors and micro computer electronics replace mechanical parts for quiet, reliable and highly precise operations. The instant you drop in the film cassette — you're virtually ready to shoot! ready for clear, sharp, properly exposed pictures every time!

## System operation/ End of Film Indicator

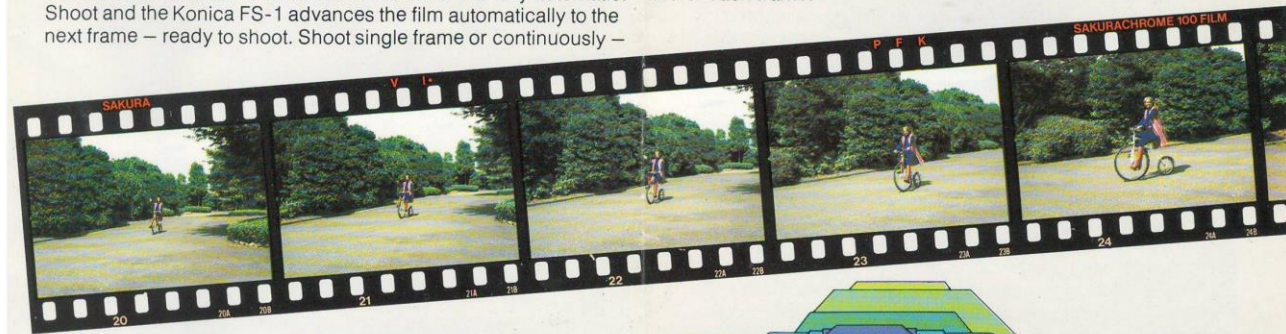
A tiny light emitting diode (red-LED) located at the back of the Konica FS-1 camera will light every time the camera operates. It also signals when you are at the end of the roll.



# Konica FS-1/Auto film advance

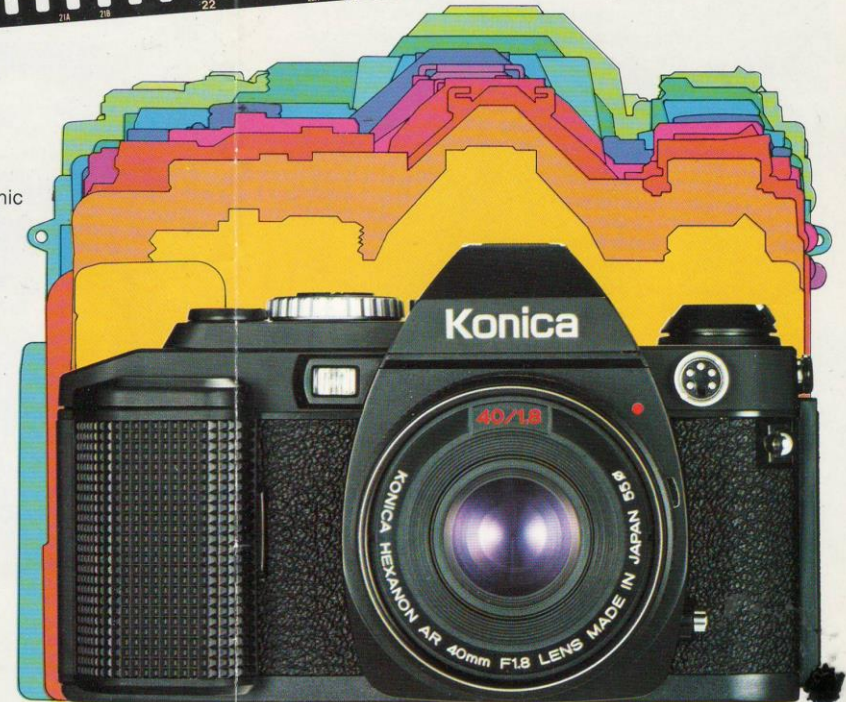
This amazing new Konica totally eliminates the film wind lever of conventional cameras. Film advance in the FS-1 is fully automatic! Shoot and the Konica FS-1 advances the film automatically to the next frame — ready to shoot. Shoot single frame or continuously —

at 1.5 frames per second, with the correct exposure automatically set for each frame!



## Compact size

The totally integrated Konica FS-1 is astonishingly compact, yet packed with automatic features and advanced electronic systems. It weighs a mere 800g (28.2 oz) complete with standard 40mm f1.8 lens and batteries.



Compare the compact size of the new Konica FS-1 with other SLR's and their separate accessory autowinders. The Konica FS-1 is small, functionally designed for easy and fast handling.

# Konica FS-1/ Shutter priority automation

Sharp results on every exposure with the famed Konica shutter-priority system.

Photograph a smiling child or a fast-moving car — get both perfectly sharp because you control the shutter speed! You simply select the shutter speed to match the subject action: the FS-1 automatic exposure system then sets the lens for perfect results.

The Konica FS-1 incorporates the most advanced photocell, Gallium Arsenide Phosphide (GaAsP), to analyze the light indoors or out. The GaAsP cell is faster, more accurate and feeds data continuously to the CPU which sets the lens to the correct opening within 1/10th F stop accuracy.

The shutter-priority system was introduced by Konica in programmed shutters over 20 years ago — and the FS-1 offers this system in its most advanced form. It eliminates the "perfectly exposed blur". Shutter-priority means you can always "freeze" the action — always get consistently sharp pictures.

## Automatically perfect exposures

Every Konica Hexanon lens features the fully automatic exposure (AE) mode . . . and also a manual setting option for special effects and creative experimentation. For picture-taking in any light, merely set the film speed (ASA), the lens to



AE and the shutter speed to match the subject action. From that moment on, your FS-1 shutter-priority system means you get clear, sharp pictures every time! Just aim, focus and shoot — for perfect exposures, frame-after-frame, automatically.

## Shutter speeds to 1/1000th; ASA speeds 25-3200

The new Konica FS-1 provides precisely accurate shutter speeds from 2 seconds to 1/1000th of a second, plus B (bulb for time exposures). The shutter itself is an all-metal, dual micro solenoid, electronically operated vertical-travel shutter.

Konica engineers and the designers of the famed Copal shutters created this all-new shutter, a break-through in size, accuracy, noise reduction and lower power usage. The ASA speed setting is housed within the shutter speed dial for fast adjustment and quick observation. It has an ASA range from 25 to the future speed range of 3200.

# Konica FS-1/ Viewfinder



## Precise information at a glance

The Konica FS-1 viewfinder is the "control center" for the creative photography and exciting pictures. In the viewfinder

- 1 the proper LED glows to indicate the aperture setting;
- 2 warning lamps help you avoid over or under exposures;
- 3 manual operation is indicated;
- 4 the flash ready light glows;
- 5 the battery check is automatic.

## Quick, accurate focusing

Three separate focusing areas assure precise, fast focusing. There's a split-image prism at the center for foolproof, razor-sharp focus: just align two line segments. For outdoor scenes, a micro-diaphragm ring instantly delineates sharp focus. For long telelens focus, there's a fine ground glass circle.

## Battery check — automatic!

All systems of the Konica FS-1 are powered by four standard AA (penlight) batteries. When the battery power becomes low, two LED's glow in the viewfinder as a warning, indicating that there is still power to shoot five more rolls of film.

# Konica FS-1/ Auto flash system

The Konica FS-1 together with the Konica X-24 auto electronic flash, make flash photography simple and automatic. The Konica X-24 uses thyristor, series circuit electronics for the maximum number of flashes and lowest battery consumption. The Konica X-24 and FS-1 CPU function together to make all adjustments for correct flash results — automatically.

Attach the Konica X-24 to the "hot shoe" atop the FS-1. Automatically, the camera advises the X-24 of the ASA speed of the film within the camera. When the capacitors of the X-24 have reached full charge, the CPU automatically:

- ① changes the camera shutter speed to a fast 1/100th second for proper flash synchronization,
  - ② adjusts the lens aperture to f5.6 or f11 as preselected,
  - ③ shows "flash ready" in the viewfinder as a blinking LED.
- Until the X-24 reaches full charge, the FS-1 functions at normal automatic exposure. Over and under exposure LED's that glow in the viewfinder to guide you for ambient light photography. The Konica FS-1 automatically changes to autoflash operation when the X-24 flash has recycled.



The Konica X-24 Autoflash can be used together with the Konica FS-1 in continuous 1.5 fps operation using ASA 400 film, to approximately 10 feet, matching the sequence photography capability of the Konica FS-1.



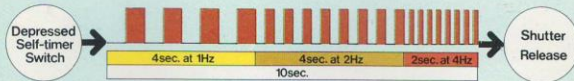
The Konica X-24 Auto electronic flash provides an unprecedented degree of flash automation in combination with the FS-1:

- automatic ASA setting for the film speed set in the camera.
- automatic LED read-out in the viewfinder of flash readiness.
- automatic change of the camera shutter speed (to 1/100th) at the instant of full charge.
- automatic lens setting to f5.6 or f11 as preselected at the instant of full charge.
- automatic FS-1 operation at normal auto exposure settings while flash is recycling.

The Konica X-24 flash unit has been compactly designed to match the profile of the FS-1, contoured to fit neatly around the pentaprism for maximum compactness of camera and flash. It provides up to 300 flashes from its own power supply of four Alkaline or rechargeable AA batteries, and provides flash duration in a range from 1/1000th to 1/50,000th of a second. With nicad batteries, maximum recycling time is a fast 3 seconds. Connection to the CPU of the FS-1 is automatic. The f/11 or f/5.6 LED will blink when the flash is fully charged. For family photography, parties, for portraits of family scenes use the f/11 setting. For large scenes and greater flash distance requirements the f/5.6 setting assures light coverage. The X-24 covers the field of a 35mm wide-angle lens. It is daylight color balanced at 5600°K.

# Konica FS-1/ Features

**Self-Timer:** Here's a self-timer that glows in an ever-faster series of red-light "blinks" before the shutter trips in ten seconds, more than enough time for you to get into the picture. From anywhere in the room, you can see the self-timer sequential light pattern.



**Information terminal:** The Konica FS-1 provides complete access to the CPU for the special requirements of remote control photography and other special purpose photography. The information terminal provides for a special electronic cable release, left hand operation microswitch and extension of the camera operation to the ultra-sophisticated requirements of science, nature, medical and other applications.



## Compact 40mm f1.8 Hexanon lens:

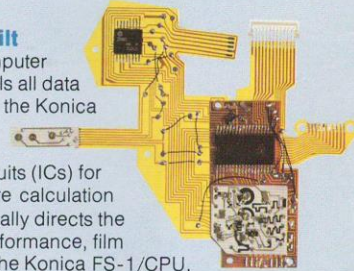
To match the compact Konica FS-1, a new compact Color Dynamic coated Hexanon 40mm f/1.8 lens was designed. Only 1.1" in depth and weighing 4.9oz, it is uniquely lightweight. The 40mm f1.8 Konica Hexanon lens is fully automatic with manual override. It provides a slightly wide-angle coverage for increased field of view and greater depth of field. It focuses to a close 17.7" and uses standard 55mm diameter filters.



# Konica FS-1/ Technical details

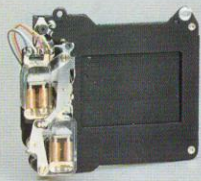
## World's largest, most functional CPU ever built into a camera

The computer system analyzes and controls all data via analog-digital logic from the Konica FS-1 systems. This central processing unit (CPU) together with integrated circuits (ICs) for light measurement, exposure calculation and motor control electronically directs the aperture control, shutter performance, film advance and LED displays the Konica FS-1/CPU, the world's largest for 35mm SLR cameras with more than 1100 gates and 250 transistors to provide a capability for superior performance, high precision and more functions than available in less sophisticated cameras.



## Pulse operated - Twin micro solenoid shutter

A newly created vertical travel metallic shutter uses two micro solenoids, eliminating many mechanical gears, springs, lever and linkages. The FS-1 shutter is CPU controlled for extremely accurate shutter speeds.



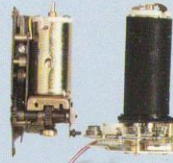
Shutter unit of the FS-1



Conventional mechanical shutter

## Micro motors for shutter, film wind

Two specially developed tiny micromotors act instantly to speed the mirror return, shutter charge, automatic aperture control mechanism, film autoloader, autostart and autoadvance - all electronically directed by the CPU.



# Konica Hexanon lenses...Computer-designed, precision-crafted

The total family of Konica Automatic interchangeable lenses, starting with a 15mm fisheye and advancing through wide-angle, standard, zoom, short and medium tele to ultratelephotography are leading examples of state-of-the-art lens performance. All are instantly fitted to the FS-1 to meet your every possible photographic challenge.



	Focal Length	Apertures Max. - Min.	Construction Elements/Groups	Angle Of View	Mir. Focus From Film Plane	Length	Max. Diameter	Weight	Filter	Lens Hood
Fish-eye	15mm UC	f/2.8 - f/16	10/7	180°	0.15m (0.5')	60mm (2.4')	70mm (2.8')	395g (13.9 oz.)	Built-in	Built-in
Extreme Wide	New 21mm	f/2.8 - f/22	9/8	92°	0.2m (0.7')	39mm (1.5')	63mm (2.5')	215g (7.6oz.)	55mm	Incl.
	24mm	f/2.8 - f/16	8/8	84°	0.25m (0.8')	54mm (2.1')	63mm (2.5')	280g (9.9 oz.)	55mm	Incl.
Wide	28mm UC	f/1.8 - f/16	8/8	75°	0.18m (0.6')	63mm (2.5')	66mm (2.6')	380g (13.4 oz.)	55mm	Incl.
	New 28mm	f/3.5 - f/22	5/5	75°	0.3m (1.0')	36mm (1.4')	63mm (2.5')	175g (6.2 oz.)	55mm	Incl.
	35mm	f/2.0 - f/16	9/7	63°	0.3m (1.0')	57mm (2.2')	65mm (2.6')	320g (11.3 oz.)	55mm	Incl.
Standard	35mm	f/2.8 - f/16	6/5	63°	0.3m (1.0')	57mm (2.2')	63mm (2.5')	240g (8.5 oz.)	55mm	Incl.
	New 40mm	f/1.8 - f/22	6/5	56°	0.45m (1.5')	27mm (1.1')	63mm (2.5')	140g (4.9 oz.)	55mm	Avail.
	New 50mm	f/1.4 - f/22	7/6	46°	0.45m (1.5')	45mm (1.8')	63mm (2.5')	265g (9.3 oz.)	55mm	Avail.
Telephoto	50mm	f/1.7 - f/16	6/5	46°	0.55m (1.75')	40mm (1.6')	63mm (2.5')	210g (7.4 oz.)	55mm	Avail.
	57mm	f/1.2 - f/16	7/6	42°	0.45m (1.5')	50mm (2.0')	72mm (2.8')	460g (16.2 oz.)	62mm	Avail.
	85mm	f/1.8 - f/16	6/5	28.5°	1m (3.5')	67mm (2.6')	65mm (2.6')	390g (13.8 oz.)	55mm	Incl.
	100mm	f/2.8 - f/16	5/4	24°	1m (3.5')	62mm (2.4')	63mm (2.5')	290g (10.2 oz.)	55mm	Incl.
	135mm	f/2.5 - f/16	4/4	18°	1.2m (4.0')	96mm (3.8')	69mm (2.7')	650g (22.9 oz.)	62mm	Built-in
	New 135mm	f/3.5 - f/22	4/4	18°	1.5m (5.0')	82mm (3.2')	63mm (2.5')	315g (11.1 oz.)	55mm	Built-in
Ultra Telephoto	New 200mm	f/4.0 - f/22	5/5	12°	2.5m (8.0')	121mm (4.8')	65mm (2.6')	515g (18.2 oz.)	55mm	Built-in
	300mm	f/4.5 - f/16	8/5	8°	4m (13.0')	168mm (6.6')	80mm (3.1')	965g (34.0 oz.)	72mm	Built-in
	300mm	f/6.3 - f/22	9/5	8°	4.5m (15.0')	146mm (5.7')	65mm (2.6')	560g (19.8 oz.)	55mm	Built-in
Zoom	New 400mm UC	f/5.6 - f/45	9/5	6°	4m (13.0')	217mm (8.5')	83mm (3.3')	1,600g (3.5 lbs.)	77mm	Built-in
	1000mm*	f/8.0 - f/22	7/6	2.5°	25m (80.0')	455mm (17.9')	200mm (7.9')	8,500g (18.7 lbs.)	55mm	Incl.
Macro	New 35-70mm	f/3.5 - f/22	9/9	63-34°	0.35m (1.2')	96mm (3.8')	67mm (2.6')	480g (16.9 oz.)	55mm	Incl.
	45-100mm UC	f/3.5 - f/16	11/10	52-24°	0.35m (1.2')	85mm (3.3')	70mm (2.8')	570g (20.1 oz.)	55mm	Built-in
	80-200mm UC	f/4.0 - f/16	14/10	30-12°	0.7m (2.3')	157mm (6.2')	68mm (2.7')	830g (29.3 oz.)	62mm	Built-in
Teleconverter	55mm	f/3.5 - f/22	4/3	43°	0.25m (0.83')	60mm (2.4')	64mm (2.5')	290g (10.2 oz.)	55mm	Incl.
	105mm	f/4.0 - f/22	5/3	23°	*	47mm (1.9')	63mm (2.5')	230g (8.1 oz.)	55mm	Incl.
New 2X	-	-	6/5	-	-	43.5mm (1.7')	63mm (2.5')	230g (8.1 oz.)	-	-

\* All lenses fully automatic except as indicated.

\* Depending on bellows extension length.